

Record-Breaking Funding

2022 Annual Impact Report



Thanks to you...

St. Boniface Hospital Foundation
granted more than ever before to
support patient care and medical
research in 2022.

Mission

The mission of St. Boniface Hospital Foundation is to raise funds to support excellence in health care and research at St. Boniface Hospital in a manner that is guided by the legacy and values of the Grey Nuns.

Vision

St. Boniface Hospital Foundation will be at the forefront of fundraising to promote excellence in health care and research to create a healthier society.



C1026 – 409 Taché Avenue

Winnipeg, MB R2H 2A6

Open weekdays: 8:30 a.m. to 4:30 p.m.

204-237-2067 or 1-866-472-4682

beallifeline.ca

info@stbhf.org



Writers: Randy Matthes,
Nigel Moore, St. Boniface Hospital
Research, Lisa Thomson Stifora,
Kate Yacula

Design: Bounce Design

Printing: Prolific Group

Photography: Steve Hiebert/
Personal Express Photography, Randy
Matthes, Nigel Moore, Ian McCausland
Photography, Kelly Morton Photography

Translation: Freynet-Gagné
Translation and Consulting

Record-Breaking Funding

Your support made it possible for St. Boniface Hospital Foundation to grant **more than \$11,070,000 to Hospital initiatives supporting patient care and medical research** in 2022 – the highest-ever amount in our history!

Table of Contents

Your Year of Commitment	3
Your Impact	4
Western Canada's No. 1 Research Hospital. Again!	4
Emergency Care for all Manitobans	5
Grant Report: Projects You Funded in 2022	6
Can Fish Oil Lower Your Risk of Catching COVID-19?	7
You Gave Chemo Patients Cooled Comfort	8
You Paid Tribute to a Dedicated Doctor	8
You Made Memories, Served with Kindness	9
A Better Way to Save Lives	10
You Encouraged Emerging Research Leaders	11
Your Endowment Funds	12
2022 Donors	14
"A Game-Changing Experience"	19
The Best Critical Care	20
You Had Fun with Us in 2022	20
The Emergency Department our Community Deserves	22
Sending Them Home	23
Better-Informed Decisions in Heart Valve Implantation Care	23
A Generous Nature	24
Legacy of Hope Society	25
Statement of Financial Position	26
Statement of Operations	27
Governance and Staff	28

Your Year of Commitment

A commitment is a promise. It is a pledge.

We dedicate ourselves to the things that matter the most to us.

As a St. Boniface Hospital Foundation donor, you showed us you were not afraid of making a commitment in 2022. You stepped forward and promised to help make patient care better in Manitoba, and we could not be more grateful.

Medical research with impacts that reach around the world? You said, "count me in," without a second thought. That's true commitment.

Because of your dedication, last year we were able to give our health-care teams better equipment to use, to make their work lives less stressful. For example, as part of our community of caring you supported Manitoba's first endovascular hybrid operating room. Foundation donors fully funded the initiative and made the \$6.5 million project possible for St. Boniface Hospital. You can read more about it on page 19 of this Annual Impact Report.

You also made \$3.2 million in commitments last year for the Emergency Department redevelopment and expansion project currently underway at the Hospital. You will find an update on that exciting project on page 22.

More than 330 Foundation donors choose to give monthly. Being one of them is among the best – and easiest ways to ensure St. Boniface Hospital continues to

provide the best care possible now, all year long, and into the future. It feels great knowing the Hospital can count on you.

Joining the Legacy of Hope Society is a powerful and meaningful commitment to the Hospital. By leaving gifts in their estates, our Legacy of Hope Society members will be remembered for making a selfless commitment to patients and caregivers they may never meet.

You can see the list of current members and read about one, Blair Mason, on pages 24-25. Those who have designated an estate gift know how significant it will become for St. Boniface Hospital. You might consider it the ultimate act of compassion.

On behalf of the St. Boniface Hospital Foundation Board and staff, thank you for your dedication to our cause.



Karen Fowler

Karen Fowler, CFRE
President and CEO



Carmine Militano

Carmine Militano, P.Eng., ICD.D
Chair, Board of Directors

Land Acknowledgement

St. Boniface Hospital Foundation is located on Treaty 1 territory, the traditional land of the Anishinaabeg (Ojibway), Ininiwak (Cree), Anishiniwak (Oji-Cree), Dakota Oyate (Dakota) and Denesuline (Dene) peoples, and the National Homeland of the Red River Métis. We acknowledge that these Nations were the first to protect and care for this land and today we benefit from that.

We respect the treaties that were made on these territories and we acknowledge the harms and mistakes of the past.

Recognizing that we are all treaty people, we dedicate our efforts towards a more loving and compassionate world as we all move forward in a spirit of reconciliation and collaboration.

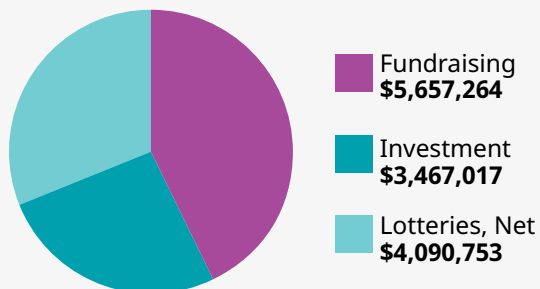
Your Impact

You showed us amazing things were possible in 2022

St. Boniface Hospital Foundation has raised more than **\$281 million** since 1971.

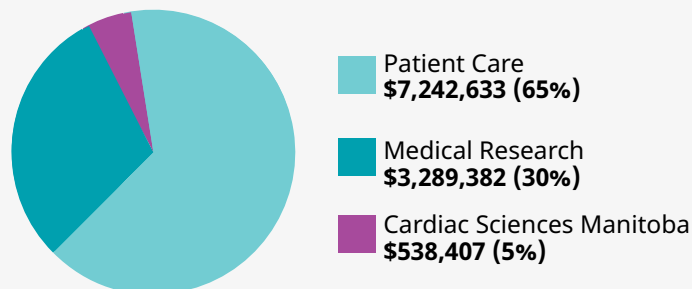
Your gifts have had a profound impact on the tens of thousands of patients and their families who depend on St. Boniface Hospital each year. Thank you.

Funds Raised (Revenue)



You helped the Foundation to raise a total of **\$13,215,034** in 2022.

Funds Granted



Thanks to you, the Foundation granted a total of **\$11,070,422** in 2022.

You made St. B

Western Canada's No. 1 Research Hospital. Again!

For the 11th year in a row, St. Boniface Hospital is among Canada's leading research hospitals, taking the number 1 spot in Western Canada and ranking in the top five nationally. This is according to data released in January by Research Infosource Inc., Canada's source of R&D intelligence.

"We have a phenomenal team of researchers, clinicians and students at St. Boniface Hospital Research, and it is wonderful to see their efforts recognized," said Dr. Michael Czubryt (at right), Executive Director, St. Boniface Hospital Research.

"The outstanding partnership we enjoy with the University of Manitoba, the University of Winnipeg, and Agriculture and Agri-Food Canada, **along with the support of donors through St. Boniface Hospital Foundation**, is critical for generating new discoveries that broaden our understanding of disease and its treatment," he added.

Thank you for supporting groundbreaking medical research at St. Boniface Hospital. See page 7 for more on our researchers.



You helped provide

Emergency Care for all Manitobans

In their times of personal crisis and need, Manitobans have turned to St. Boniface Hospital for more than 150 years.

From simple cuts and broken bones to mental health issues, to heart attacks and cardiovascular emergencies, the Hospital's Emergency Department has been there for the most critical moments in your life and the lives of your loved ones.

As the second largest and oldest hospital in Manitoba, and one of three in Winnipeg to provide emergency care, Manitoba's Cardiac Centre of Excellence cares for more than just the city's residents.

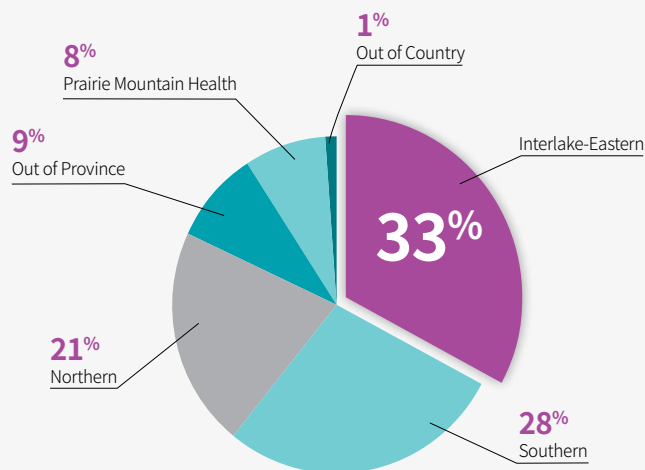
Emergency Department visits at St. Boniface Hospital

More than **42,000** in 2021/22,
or about 116 patients per day.

Projected patient visits by 2025: 55,000.

Source: WRHA 2021-22 Annual Report

Cardiac patients come from every corner of the province on a daily basis!



2021/2022

Winnipeg excluded from this list.

Source: Cognos; DSS_Datamart/Shared Health



St. Boniface Hospital's Emergency Department is undergoing a major redevelopment and expansion project, supported in part by Foundation donors. When it opens in 2025, the Emergency Department will be more than three times its current size! See page 22 for an update on the construction project.



Grant Report: Your Impact on Patient Care and Research in 2022

Thanks to you, we granted more funds than ever before to patient care and research priorities at St. Boniface Hospital.

This list represents just some examples of the good you did last year for thousands of patients in Manitoba and the well-being of people around the world.

CANADIAN CENTRE FOR AGRI-FOOD RESEARCH IN HEALTH AND MEDICINE

- Research Project: Earlier Detection of Lung Cancer
- Research Project: Fish Oil and The SARS-Cov2 Virus
- Research Project: Kidney Disease
- Research Project: Nutrition and Fetal Alcohol Spectrum Disorder

CARDIAC SCIENCES

- Bergen Cardiac Care Centre
- Endoscopic Vein Harvesting Program
- Heart Failure Clinic Enhancement
- Lipid Clinic Enhancement
- Transcatheter Aortic Valve Implantation (TAVI) Program

DIVISION OF NEURODEGENERATIVE DISORDERS

- Research Project: Autism Spectrum Disorder
- Research Project: Alzheimer's Disease
- Research Project: Diabetic Neuropathy
- Recruitment of Dr. Henry Dunn, Principal

INSTITUTE OF CARDIOVASCULAR SCIENCES

- Research Chairs & Professorships:
 - Naranjan S. Dhalla Research Chair
 - The Evelyn Wyrzykowski Family Professorship in Cardiovascular Sciences
 - The Everett Chair in Fibrosis Research
- Recruitment of Dr. Inna Rabinovich-Nikitin, Principal Investigator in Women's Heart Health
- Research Project: Cardiac Gene Biology
- Research Project: Circadian Rhythm and Cardiovascular Health
- Research Project: Immuno-Engineering Interventions Using Nanomaterials
- Research Project: Role of Scleraxis in Regulating Cardiac Fibrosis
- Research Project: Women's cardio-oncology

RESEARCH AWARDS

- The Alfred E Deacon Research Studentship Grant
- Arnold Naimark Young Investigator Award
- BMO Financial Group Research Scholarship
- Nick Shepel Student Award

- ICS Naranjan Dhalla Cardiovascular Awards
- Henry Friesen Young Scientist Award
- Institute of Cardiovascular Sciences Award for Master's Student
- Institute of Cardiovascular Sciences Leadership Gold Medal
- Jack Litvack Exemplary Service Award
- James S. McGoeey Student Award
- John Foerster Distinguished Lecture Award
- Ken Bowman Research Achievement Award
- Robert Beamish Leadership Award
- Sr. Jacqueline St-Yves Publication Award
- St. Boniface Hospital Foundation / Mayo Clinic Partnership Award
- T. Edward Cuddy Student Award
- Vincenzo Panagia Distinguished Lecture Award
- Rodrigue Travel Award

I.H. ASPER CLINICAL RESEARCH INSTITUTE

- Research Project: Chronic skin disease
- Research Project: Flax Beverage Study
- Research Project: Vascular health

PATIENT CARE & EXPERIENCE

- Galerie Buhler Gallery
- Committal of Ashes Ceremony
- Emergency Department redevelopment and expansion
- Endovascular Hybrid Operating Room
- Grief Support Program
- Healing Through the Arts Program
- McEwen Building Patient BBQ
- Medical equipment: C-MAC S System
- Medical equipment: Cardiopulmonary Exercise Testing Equipment
- Medical equipment: LUCAS 3 Chest Compression System
- Medical Equipment: Mobile Sonosite LX Ultrasound System
- Medical Equipment: Zoll Simulator
- Medicine Oncology Support, Patient Fridges
- Mental Health Staff Comfort Room
- Neonatal Intensive Care Unit Enhancement
- Repetitive Transcranial Magnetic Stimulation (rTMS) Program
- Teddy Bears Perinatal Keepsake Fund

STAFF RECOGNITION & SUPPORT

- Anesthesia Department Education
- Family Medicine Scholarships
- Nursing Professional Development
- Palliative Care Medicine Residency Education
- Palliative Care Award
- Rehabilitation Services Awards
- Ronald J. Duhamel Innovation Award
- Wyrzykowski Family Graduate Nurse Awards

You went fishing for the answer

Can Fish Oil Lower Your Risk of Catching COVID-19?

Researchers working at the Canadian Centre for Agri-Food Research in Health and Medicine (CCARM), St. Boniface Albrechtsen Research Centre, have discovered that animals consuming fish oil have fewer anchor points required for entry of the SARS-CoV2 virus into the heart, aorta, and kidneys.

“This discovery represents a potential new tool for our medicine chest, a therapeutic that will not lose potency as vaccines do,” said Peter Zahradka, Principal Investigator, Molecular Physiology, CCARM, and Professor, Physiology and Pathophysiology, Rady Faculty of Health Sciences, University of Manitoba.

At the cellular level, scientists Shiqi (Sunny) Huang, Carla Taylor, and Peter Zahradka have shown fish oil results in a 50 to 75 per cent reduction in a protein known as ACE2 that is present on the surface of certain cells. Since it acts as an anchor for SARS-CoV-2 to

attach to cells, this reduction in ACE2 means these cells cannot be infected as easily by the virus responsible for COVID-19.

Why fish oil? Previous research conducted at CCARM has shown the beneficial effects of DHA, a fish oil component, on blood vessels in relation to cardiovascular disease. It was on that basis the team began to explore how DHA treatment might affect the number of ACE2 anchor points SARS-CoV2 uses to infect tissues.

Keep reading! There is more about this new research at sbrc.ca/ccarm/.

Thank you for supporting groundbreaking medical research at St. Boniface Hospital.



From left: Shiqi (Sunny) Huang, Carla Taylor, and Peter Zahradka of St. Boniface Hospital Research.

You Gave Chemo Patients Cooled Comfort

Chemotherapy is tough enough without an empty stomach on top of it.

Thanks to a Foundation grant, patients undergoing chemotherapy at St. Boniface Hospital have easier access to food from home.

The Medicine Oncology department used funds to purchase two refrigerators, encouraging patients and families to bring in the food the patient will enjoy. On castors, the fridges can go where the patient is sitting.

"Many cancer patients experience issues with taste and appetite," said Medicine Oncology Program Director Kirsten Bourque. "With easier access to their own food, a patients' overall stay is improved."



Thank you for providing added comfort and convenience for patients undergoing chemotherapy at St. Boniface Hospital.

You Paid Tribute to a Dedicated Doctor

Colleagues, family, and associates of the late Dr. David Mymin honoured his legacy by raising funds for the cardiac care clinic he tirelessly built.

A cardiologist whose career spanned more than six decades, Mymin retired in 2019, still pursuing his clinical and research interests at age 90. He passed away in 2021 following a bout with pancreatic cancer.

After Mymin's cancer diagnosis, members of the Lipid Clinic in the I.H. Asper Institute at St. Boniface Hospital led a tribute gift campaign. Their generous support enabled the clinic to purchase equipment to enhance patient care and clinic functions.

"David wanted this to be a clinic of excellence providing a necessary service that we know from research makes a difference in reducing heart disease," said Dr. Asad Junaid at a dedication ceremony for the newly named Dr. David Mymin Lipid Clinic.

"We want to carry it on in the spirit David intended."

Thank you for carrying out the vision of Dr. David Mymin by supporting the lipid clinic at St. Boniface Hospital.



From left: Dr. James Tam; Maryse Mymin, David Mymin's widow; and Dr. Asad Junaid at the dedication ceremony for the Dr. David Mymin Lipid Clinic on October 20, 2022.

You Made Memories, Served with Kindness

Mental Health Program staff appreciated a summer barbecue made possible by a Foundation donor's gift.

The first-time barbecue took place in the Sisters' Garden, a green space at the back of St. Boniface Hospital, a brief stroll from the McEwen Building (pictured below), home to the Hospital's Mental Health Program.

"We enjoyed great food, listened to live music, and created memories with our patients and volunteers," the Ambulatory Care Service (Outpatient) team wrote in a letter to the donor.

"We received countless compliments and positive feedback from our patients."

A patient shared with the team that they had never been invited to a barbecue before, making the event so meaningful to them.

"Your investment gives our team the resources we need to help our patients in their recovery journey and to find ways to increase their quality of life through socialization opportunities," the letter continued.

"This may have been a single event, but we are confident it will create lasting ripple effects in so many positive ways. And we at St. Boniface are tremendously grateful for your kind gesture. You truly are making a difference."

You are allowing McEwen Building patients to heal and recover in a calm, peaceful, and natural setting. Thank you.



"Our entire mental health outpatient team at St. Boniface wants to express our sincere gratitude for your donation. Because of your contribution, we held our first barbecue in the Sisters' Garden this summer." - Ambulatory Care Service (Outpatient) team



Your support has given caregivers

A Better Way to Save Lives

Endoscopic vein harvesting system reducing complications, infections

Foundation donors like you have changed the way Cardiac Sciences Manitoba performs some cardiac surgeries at St. Boniface Hospital, making them safer and dramatically reducing the number of infections and other complications in patients.

You made it possible for Manitoba's Cardiac Centre of Excellence to be the first facility in Western Canada to offer endoscopic vein harvesting (EVH) to patients as part of coronary artery bypass grafting surgeries. Bypass grafting is required in about 400 to 600 cases at the Hospital each year.

The first patient to benefit from EVH at St. Boniface was a gentleman in his 50s, who underwent the procedure in January 2023. As a daily runner, getting back on his feet as soon as possible post-surgery was important to him.

"We are beyond grateful to donors for giving us this opportunity," said Nancy Luxa-Le Blanc, the Physician Assistant at Cardiac Sciences Manitoba who performed the operation. "To our care team, the introduction of EVH is the most exciting thing that has ever happened."

The delicate surgery uses blood vessels harvested from another part of the body, most often the patient's leg. Luxa-Le Blanc explained using her finger as an example.

"Let's say my finger is an artery on the heart. My knuckle here is the blockage. So, we attach something just before the blockage, and just after, onto the heart, and that stays permanently."

Taking blood vessels from the leg or arm has traditionally been done using an open vessel harvesting method at St. Boniface. It required the surgeon to make large incisions along one leg, often from ankle to groin. "It has three layers of suturing in order to close it properly," said Luxa-Le Blanc. The Hospital's first EVH patient, mentioned above, would have needed an incision at least from his knee to groin otherwise.

With such a large incision, there is always the risk of complications. The infection rate can be as high as 17 to 20 per cent. "When you get a leg infection it means up to two weeks' extra hospital stay, antibiotics in hospital, numerous post-op visits to the clinic, and maybe home care for wound dressings," she said.

With the new endoscopic vein harvesting system, after proper positioning of the patient and identifying the location of the vein, a 2-centimetre incision is made, often above the knee, and the endoscopic instrument (called the dissector) is carefully inserted.

"We're able to follow it up the vein using the camera, then it is cut free and removed," explained Luxa-Le Blanc. This practice does not harm the remaining blood vessel network, which heals and maintains enough blood flow to the leg.

"When you see patients recovering and going home earlier, with fewer complications, it is amazing. It is a gift. It is a blessing."

St. Boniface Hospital is at the leading edge of medical technology, all thanks to you.

Advantages of EVH

- ♥ 92% fewer wound complications
- ♥ Reduced postoperative pain by 81%
- ♥ Disturbances in mobility decreased by 69%
- ♥ 1-day shorter length of stay
- ♥ 97% fewer total wound clinic visits
- ♥ Overall treatment requirements and total wound care costs were 96% lower for EVH patients.

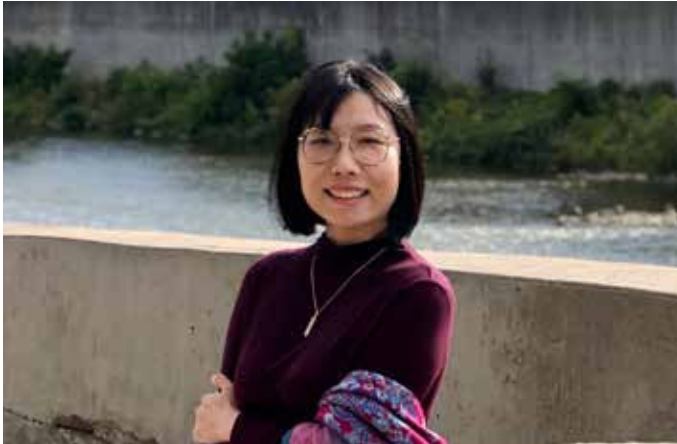
**Nancy Luxa-Le Blanc,
Physician Assistant, Cardiac Sciences
Manitoba at St. Boniface Hospital.**



You Encouraged Emerging Research Leaders

A pair of University of Manitoba students at St. Boniface Hospital Research are feeling grateful to donors like you. They are among the many students who received endowed student awards last November to support their studies.

The two students are working at the Canadian Centre for Agri-Food Research in Health and Medicine (CCARM), St. Boniface Hospital Albrechtsen Research Centre.



Shiqi (Sunny) Huang received more than \$17,900 from the Mark G. and Patricia N. Smerchanski Endowed Studentship.

Huang, a first-year PhD student, graduated last summer with a master's degree in human nutritional science. She is researching the effects of lipids on cardiovascular health in the metabolic nutrition lab at CCARM. Part of her work, with the ongoing support of the award, was published in May 2023 in the *International Journal of Molecular Sciences*.

"I am grateful for the financial support, but the moral support from endowment donors like you is even more meaningful to me," she said. The award has let her continue her study this year, beyond what was published.



Chamali Kodikara received more than \$7,700 from the Frank & Jeanne Plett Endowed Studentship.

Kodikara, meanwhile, is a student researcher with Agriculture and Agri-Food Canada (AAFC) at CCARM. She is researching the identification of bioactive compounds in prairie berries for cardiovascular health.

As an international student, she came here from Sri Lanka in January 2022 and started her first year at AAFC's Research and Development Centre in Morden, Manitoba.

The award has contributed to her tuition and living expenses. "It has helped me so I can focus on my research. It lets me be a full-time student spending most of my days in the lab," she said.

Thank you for supporting the next generation of researchers at St. Boniface Hospital.

Your Endowment Funds (as of December 31, 2022)

Your visionary support allowed the Foundation to grant **more than \$2 million** in endowment interest to Hospital initiatives in 2022.

Adolph & Bernice Sebunchak Endowment Fund
Aiello Endowment Fund
Albert J. Duseigne Endowment Fund
Alfred Saler Endowment Fund
Alfred, Léa & Lorraine Smith Fund
Arnold and Lil Conner Memorial Endowment Fund
Barrie and Marvelle McPherson Cardiac Care Endowment Fund
Barry Albert Beelaert Endowment Fund
Bartlett Family Endowment Fund in memory of J. Alan, Audrey, Joan, and Vera Hackett
Beckwermer Family Endowment Fund
Berdie and Irvin Cohen (BERVIN) Endowment Fund
Bibiana Wai-Yin Chan Yee Endowment Fund
Bill & Fimi Glesby & Families Fund
BMO Financial Group Research Scholarship for Excellence Fund
Bockstael Endowment Fund
Cardiovascular Awards Fund
Chris and Anne Grady Endowment Fund
Clare and Shirley Moster Endowment Fund
Coghlan Stevens Family Fund
D.M. Lemoine Endowment Fund
Demion Orzechowski Endowment Fund
Don and Shirley Phillips & Family Fund
Dr. Alfred E. Deacon Studentship Endowment Fund
Dr. Arnold Naimark Award Fund
Dr. Edward and Freda Bennett Endowment Fund
Dr. Henry G. Friesen Award Fund
Dr. J.D. Culligan Memorial Fund
Dr. James S. McGoeys Student Research Award
Dr. John Foerster Distinguished Lecture Fund
Dr. Michel Tétreault Transformation Memorial Fund
Dr. Naranjan Dhalla Cardiovascular Sciences Endowed Chair
Dr. Pawan K. Singal, ICS Director Fund
Dr. Phil Hall Cradle Endowment Fund
Dr. Robert E. Beamish Fund
Dr. T. Edward Cuddy Student Research Award
Dr. Vincenzo Panagia Fund
Edith and Robert Lytle Endowment Fund
Elizabeth Kilbride Endowment Fund
Ellen & Albert Hanson Endowment Fund
Ervin and Lorraine Petkau Endowment Fund
Ettie Morris Endowment Fund
Eugene Huynen Endowment Fund
Evelyn and Conrad Wyrzykowski Endowment Fund
Foerster Centre for Health Research on Aging Fund

Fonds d'innovation Ronald Duhamel Innovation Fund
Fonds Sr. Jacqueline St. Yves Award Fund
Fonds Sr. Jacqueline St. Yves Fund
Frank and Mary Louise Young Endowment Fund
G. Campbell & Elsie MacLean Endowment Fund
Gabriel et Marcelle Forest Endowment
Gary Landau Wolfson Endowment Fund
George & Doreen Guenette Endowment Fund
George and Mary Kehler Endowment Fund
George B. and Mary Watkins Endowment Fund
Gerard and Maureen Rodrigue Travel Award
Ghlomali and Robabeh Shams Clinical Research Endowment Fund
Ghlomali and Robabeh Shams Neurodegenerative Disorders Endowment Fund
Glad and Bruce MacNeill - Karen, Michael, Caleigh and Liam Patrick Family Fund
Gladys & Gerald Biehl Endowment Fund
Goldie and Frank Billinkoff Endowment Fund
Grief Support Program Endowment Fund
Harry Horton Allen Endowment Fund
Hayley Rachel Stevenson Endowment Fund
Helen and Hank Promislow Endowment Fund
Hulda Eisbrenner Endowment Fund
J & M Osman Fund
Jack Aron and Aline Trudeau-Aron Endowment Fund
Jack Litvack Award for Excellence in Service Fund
Jacqueline and Murray Kilfoyle Endowment Fund
Jean Louis Maguet Memorial Fund
Jean Polet Endowment Fund
Jim Orzechowski Memorial Endowment Fund
Joe and Geraldine Rewucki Family Endowment Fund
John and Bonnie Buhler Endowment Fund
John and Dolores Morton Endowment Fund
Joseph and Sola Mae Winter Fund
Joseph and Victoria Brownstein Endowment Fund
Judy Seipp Endowment Fund
Kalwant (Ken) Dhalla Endowment Fund
Karyn Globerman Endowment Fund
Ken Bowman Lectureship Fund
Larry Rosenberg Memorial Fund
Leslie and Dwaine King Endowment Fund
Margret Helen Larner Memorial Endowment Fund
Mark G. and Patricia N. Smerchanski Endowed Studentship Fund
Meagher Family Endowment Fund
Michael Malech Endowment Fund

Did you know?

St. Boniface Hospital holds **\$47.8 million** in endowments.
Thank you for placing your trust in our organization.

Nancie Mauro Memorial Fund	The Blank Family Endowment Fund
Nick Shepel Student Award Endowment Fund	The Evelyn Wyrzykowski Family Professorship in Cardiovascular Sciences
Olga Dilay Endowment Fund	The Frank & Jeanne Plett Endowed Studentship
Palliative Care Endowment Fund	The Gary Bachman Memorial Endowment Fund
Palliative Medicine Residency Education Award	The Honourable Douglas and Patricia Everett and Royal Canadian Properties Limited Endowment Fund
Pamela Waver Palliative Care Educational Award Endowment Fund	The Ivan Berkowitz Endowment Fund
Paul Albrechtsen Cardiac Research Fund	The Jack Mowat Visiting Scientist Endowment Fund
Paul Albrechtsen Cardiac Sciences Program Endowed Fund	The Joy & Morley Lertzman Fund for Research and Education in Respiratory Medicine
Paul and Rose Rudko Endowment Fund	The Leniliza Sarmiento Endowment Fund
Philippe J. and Yvette Prince Endowment Fund	The Lucille Blanchette Endowment Fund
Purohits of Narwala Endowment Fund	The Moltschanow Endowment Fund
Research - Brain & Nerve Diseases Endowment Fund	The Myles Robinson Memorial Heart Fund
Research - Healthy Hearts Endowment Fund	The Nora Konantz Endowment Fund
Research - Lean Endowment Fund	The Ona & Alfonsas, Brone & Vytautas Janciukas Family Endowment Fund
Research - Preventive Medicine Endowment Fund	The Prier Endowment Fund - Paula, Olga, Walter and Ralph Prier and Manfred Thaller
Research - The Opportunity Endowment Fund	The Vivian Maybroda-Silverman & Burle Silverman Endowment Fund
Réseau Compassion Network Spiritual Purpose Fund	The Wyrzykowski Family Graduate Nurse Endowment Fund
Robert T Bockstael Endowment Fund	The Wyrzykowski Family Spiritual Care Endowment Fund
Russell and Frances McKittrick Endowment Fund	Victor and Cheryl Reynolds Endowment Fund
St. Boniface General Hospital School of Nursing of 1968	W.J. Hart Memorial Endowment Fund
St. Boniface Hospital Nursing Professional Development Fund	William and Anna Morhalo Endowment Fund
St. Boniface Hospital Nursing Research Endowment Fund	Woman and Child Program Fund
Stephen Walter Mical Research Endowment Fund	Wyrzykowski Family Studentship Fund
Strike Family Fund	Anonymous (2)
Susan Macdonald Memorial Fund	
TD Bank Group Graduate Student Award Endowment Fund	



In 2022, your support made the difference for former St. Boniface Hospital cardiac patients like (from left) Hemant M Shah, Paul Fontaine, Brett Arnason, and Kelly Turnbull, all of Winnipeg.



2022 Donors

Thank you to every donor who gave in 2022. Your generosity changes lives in Manitoba and around the world by supporting health-care and research priorities that advance St. Boniface Hospital's renowned spirit of compassionate care and courageous innovation.

\$100,000 to \$499,999

Benjamin
Correia Family, Bee Clean
Russ & Edna Edwards
Kinsmen Club of Winnipeg
Michael F.B. Nesbitt

\$50,000 to \$99,999

The Asper Foundation
Marjorie Blankstein and Family
Canadian Imperial Bank of Commerce
Dr Alfred E Deacon Medical Research
Foundation Inc
Lois & Brian Klaponski /
Carte International Inc
Scotiabank
The Thomas Sill Foundation, Inc.

\$25,000 to \$49,999

Bockstael Construction Ltd
Bonnie & John Buhler
Canada Life
Kevin Dick & Rebecca Friesen
Joyce Doherty
Richard Hughes ▲
The Jacob Letkemann Family
Brent & Wendy Murray
Neptune Management Ltd
PCL Constructors Canada Inc
Peter & Pearl Gold Endowment Fund -
The Winnipeg Foundation
Calvin & Jennifer Polet
Dr Donald S. Reimer & Anne Reimer
In Memory of Mark G. and Patricia N.
Smerchanski
Terracon Development Ltd
Vera And Mabel Hedges Fund

\$10,000 to \$24,999

AMC Foam Technologies Inc /
Smerchanski Family
Brett & Marnie Arnason
Jason & Meghan Bauer

Ernest I., Morris, David, Maier &
Antzi Silverberg Fund
The Hon Douglas Everett, Mrs Patricia
Everett & Royal Canadian Properties
Endowment Fund

Grant & Linda Floren
George and Mary Stevenson Fund -
The Winnipeg Foundation
Brian & Ruth Hastings
Marion & Myron Klysh
The Knight Family - Rose, Paul,
Marcia, Alan
Christiane & Charles LaFlèche ▲
Mr Howard Mandshein
Dr D. Sanger McEwen Family
Pat & Lee Meagher
Missionnaires Oblates de Saint-Boniface
Linda M. Motz (Wyrzykowski)
Mr Stuart Murray & Ms Ashleigh Everett
Pendeshuk Family Fund -
The Winnipeg Foundation
Ervin & Lorraine Petkau
Piazza De Nardi
Frank & Jeanne Plett
Oliver & Genevieve Plett
John & Doreen Reimer
Dr Pawan K. Singal
Mr & Mrs J. Bert Smith
Steinbach Credit Union
T.J. Rice Family Foundation
May Tadmán Tallman & Daniel Tallman
Kevin Van & Lisa Hastings
Tova & Larry Vickar
The Wawanesa Mutual Insurance
Company
Charles & Rita Weppeler
Paul & Alice Wyrzykowski

\$5,000 to \$9,999

Crispin Ang
Earl & Cheryl Barish
Tanya Benoit & Thomas Strike
Lucille T. Blanchette

Rodney Bloomer
Blumie & Iser Portnoy Endowment Fund
Robert L. Duncan
Dr Cora L. Fisher
Blake Fitzpatrick
Karen Fowler
FWS Group of Companies
Barbara G. Godfrey ▲
Gregg & Mary Hanson
Mary & Don Hanson
Leith Wheeler Investment Counsel Ltd
Dr Rizwan Manji
Dr Doug & Cheri McDermid
Carmine & Nancy Militano
National Bank of Canada
Roxann Stoski Medical Corporation
Salisbury House of Canada
Shirley Edith Sherwood Fund - The
Winnipeg Foundation
Siobhan Richardson Foundation
Brent & Lana Stevenson
Fred & Eileen Storzuk
Kazimir Swieszko
The Tallman Foundation
Harley Thiessen & Nikki LaFlèche
Veron Consultants Inc.
Vickar Automotive Group Employee
Social Club
Kenneth L. Wiens ▲
The Winnipeg Foundation
Zita & Mark Bernstein Family
Foundation Inc.

\$1,000 to \$4,999

Ken & Marilyn Adam
Mr & Mrs Robert E. Allan
Deanna Allen
Mr & Mrs George Ames ▼
Nicole Aminot
Donald & Beverly Aronovitch ▼
Dr Ashraf Goubran Medical Corporation
B Winslade Charitable Foundation

Mr & Mrs Andrew Bagnall
Judy Balabas ▲
Glenn & Norma Baldwin
Mr & Mrs Louis Baltus
Gisèle & Norman Barnabé ▲
Richard Barrett ▲
Al & Kerry Bartlett
Mr Richard Beamish
Wayne Beatty
Nicola & David Beaudry ▼
Virginia Beelaert ▲
Bell MTS Heart Pillow Volunteers
Bergmann Bros
Patricia Bergner
James Berryere
Linda Berscheid
The Bill & Margaret Fast
Family Foundation
Irene Blank
Christina & Garry Boeringa
Ms Ruth Ann Borenstein
Ronald Borys ▲
Mr & Mrs Doug Brown
Jim & Marilyn Burt
Darrell Bushuk & Deborah Harri
Butler Family Foundation Inc
Frank & Nina Caligiuri & Family
Carol Anne Carmichael
William D. Carroll
Janice D. Channon ▼
Ms Aileen Chmeliuk ▼
Bob & Gail Cipryk
Terry & Margot Clark
Mr & Mrs Blaine W. Coates
Mr Gary Cockshott
Donna E. Cronmiller
Crystal Springs Colony Farms Ltd
Margaret Cuddy
My Chi Cung
Monsieur Georges Dampousse
David S & Nora Kaufman Fund

▼ Monthly Donor

▲ Member, Legacy of Hope Society

Mr & Mrs Ugo De Nardi
Decker Charitable Trust
Roland DesAutels ▲
Gordon & Trudy Doerksen
Edwin & Joan Driedger
Pierre Ducharme
Anton & Susan Dueck ▲
Lloyd Dueck
Mr & Mrs Randy E. Dueck
Carolyn Duhamel
June Dutka
Sheri Dyck
Earn Foundation Fund
Edee and Jim Ross Fund
Gary & Judy Edwards
Kamala Elias
Enterprise Holdings Foundation
Darrin Erickson
Michael & Wendy Erlanger
Richard Fillion
David Filmon
Joseph & Raffi Fiorentino
Gabriel et Marcelle Forest ▲
Mr & Mrs Abdelmonam Freig
Bob Friesen & Marnie Strath
Bonita Friesen
Jeffrey Friesen
Judy Galarnyk
Amgad Gayed
Lynne Gibbings
Baljinder Gill
Morris Yehuda Glimcher
M & Mme Régis Gosselin
Erika Goyman
Barry R. Graham
John Graham & Tamara Westaway ▼
Carmen Grant
Paul & Gail Gross ▼
Sylvia F. Gunn
H.D. Simpson Charitable Foundation
Mr & Ms Al Hague
Mrs Judith Hall ▲
Gerard & Elfriede Hammerling
Nadia Hanesiak
Patricia Hannah ▼
William Hanuschak
Mrs Patricia Harras
Bill Harrison
John Harrison ▼
Wilma J. Harrison
Harvey Stambuski Charitable
Foundation
Mona Hegdekar
Helen Bowen Foundation
Ulrike Hellmuth
Charles Henaire & Monique Gauthier
Mr Mark Herron
Mr David Hiebert
Karl Himmer
Barbara Hodgins-Andrushuk
David Holmberg
Geoff & Naomi Hutchinson
May Lee L. Irvine
J A M Low Family Fund
Mary Aldona Janciukas
Janico Investments Ltd
Irene Janzen
Johnnie Javra
Karen Jensen
Jim & Sandra Boyko Family Foundation
Joan McKinley
Mr & Ms Derek Johannson

John M and Elizabeth N
Prokipchuk Fund
John Martin McLeod Fund
Donna Johnson-Bishop ▼
Gloria Jones ▲
Vincent Jonk ▼
Dr Asad Junaid
Dr Fern Karlicki
Keith and Olga McNamee
Family Foundation
John D. Kennedy ▼ ▲
Drs T. Ali & Aliya Khan
Barbara & David King
Roger & Alexandra King
David Klassen
Dr Patricia Kmet & Mr Bohdan Roslycky
Gordon Kornelson
Peter & Susanne Krahm
Dr. Tadeusz Józef Krocak Sr.
Randy Kruk
Ken Kuchma
Colleen Kuilman
L.V. Control Manufacturing Limited
& Staff
Benson D. & Sharon Labinsky
Mr & Mrs Normand J Labossiere
Monsieur & Madame Robert Lafrenière
Albert Lam
Frank Lavitt & Ahava Halpern
Karyn & Mel Lazarek
Simone Le Gal
William E. Lee
Richard M Leipsic & Kerrie Halprin
David M. Lemoine
Irene Lemoine
Dr Morley Lertzman ▲
Clay Litke
Kevin Love
Martin Lyons
Ron Lypka
MacDon Industries Ltd
Eleanor MacDonald ▲
Elda F. Macki ▲
Todd & Rachelle MacNeil
Bruce MacNeill
Marie Maguet ▲
William Mahon
Theresa Malenchak
Lynda Mandzuk
Janet & Craig Martin
Blair Mason ▲
Chris Mattern
Doris Maxwell
Mr Marty Maykut & Dr Shandis Price
Maykut
Charlene McCrea
William McFarlane
Vernon & Barbara McGregor ▲
Beverley McIntyre
Barrie & Marvella McPherson, CM ▲
MCW/Age Consulting Professional
Engineers
Lori Middleton
Dana Joby Dawn Mohr
Mr Robert Moltschanow
S.L. Morantz & Family
Clare & Shirley Moster ▲
Peter Muir & Shona Connelly
Ms A. J. Murphy
Patricia & Dennis Nord
Debbie Obray
Mr & Mrs Roy Olynick
Mr & Mrs Richard Ottenbreit
John & Shelley Page



"My family's connection began more than 80 years ago with my grandmother's convocation as a Registered Nurse. Through our support, it is our hope that donor-funded research and technology will enable the Hospital to continue serving our community with compassion and expertise for generations to come."

Chris Mattern, donor

Emily Pang
Lucette Parent
Jean-Pierre Parenty & Michelle Smith
Pasquale's Ristorante & Pizzeria
M & Mme Roméo Patry
Mr & Mrs Allan Penner
Linda K. Penner
Stanley & Debra Penner ▼
Hans Pintea
Donna B. Plant
Wesley Postma
Pratts Wholesale Limited
Philippe J. & Yvette Prince
The Prolific Group
Sandi & Norm Promislow
Providence Christian Services
Trust Fund
Robert G. Puchniak
Ralph & Phoebe Mozersky Trust Fund
Dr Paul Ratana
Heather Reichert & M N Dwayne
Rutherford
Donna Rentz
Henry Richard
Riva Richard & Kevin Kuryk
Marshall Ring
Renée Robidoux Kapitoler
Irene Robinson
Kerry Rod ▼
Robert Roehle
Royal Canadian Legion 43 - Norwood
St Boniface
Royal Canadian Legion 90 Fort Garry
Matt & Marlo Sachkiw
Satomi Saper
Mr & Mrs Walter S. Saranchuk
Leniliza Sarmiento
Joanne Sawatzky
Ernest & Irene Schade
Robert & Christine Schofield
Mr & Mrs Serge Scrafield
Patsy Searle
Hemant M. & Hina Shah
WW Shepherd & BK Vane ▲
Mr & Mrs Bob Silver
Harold Simpson
Clark & Carole Sinnott ▼ ▲
Joan & Melvin Siple
Robert Sitter
Mr & Mrs Edward Skomro
Bill & Linda Skromeda
Greg Slack
Dr Doreen L. Smith & Dr Leonard J.
Kruczynski
Dr Wendy Smith Labossiere ▼
Les Soeurs de Saint-Joseph de
Saint-Hyacinthe
Solinsky Consulting Inc
Jean Sorko ▲
Mr & Mrs Roy Olynick
Mr & Mrs Richard Spitzke
Frank & Gail Spivak

Christel & Rubin Spletzer
St. Charles Country Club
St John's-Ravenscourt School Youth in
Philanthropy Committee
Rick St. Croix ▼
Mr & Mrs Gary T. Steiman
Stephen Spitzer and Olive Spitzer Fund
- The Winnipeg Foundation
Matthew Stevens
Mr & Mrs Bruce Stevenson
Mr & Mrs Barry Talbot
Dr James Tam
Mr Robert Tapper
Peter Taves
Team Sales Ltd
Dr James & Mary Thliveris
Melanie Tooley
Louis Trepel
Paul Turenne ▼
Colin Voth
Mr & Mrs Ronald Voth
S. Linda Watson
WETT Sales & Distribution Inc
Georgina Whittlaw
Donald & Florence Whitmore
Lauren Whittaker
Lawrence Wiens
Albert & Sindee Wilhelmer ▲
Randolph Willetts
Kevin T. Williams & Kyle L. Dear
Mr & Mrs Gord Wimble
Winnipeg Regional Health Authority
Mr Chuck Winograd
Mr & Mrs Ralph Wohlgemuth
Klaus Wolf
WOW! Hospitality Concepts
Conrad J. & Monique Wyrzykowski
Mr & Mrs Matthias Yeung

\$500 to \$999

A.B.W. Investments Ltd. (Wilzer Family)
The Honourable Douglas Abra & Mrs
Glennis Abra
Mr & Mrs Ken Adamson
David & Sylvia Allan ▼
Mildred Andaya ▼
David Anderson
Mr Wayne Anderson
Tatiana & Raymond Arcand
Dr Lloyd Axworthy & Ms Denise
Omanney
Ron Bailey
Mr & Mrs Pat E. Baleja
Don & Tamara Barnabé
Sean Barnes ▼
Mr & Mrs James Beaulieu
Trevor Bebchuk
Bell MTS
Betty & Lefty Akman Fund
Lionel & Deborah Bilodeau
Clara Blawat ▼

David Borger
 Corinne Boyes
 Beverly Boyle ♥
 Sharon G. Brand (Wyrzykowski)
 Wilf Brock
 Gerald Brown
 Debbie Brown
 Bruce and Catherine Jones Fund -
 The Winnipeg Foundation
 Mrs Emily Buhler
 Robert & Shirley Burley ♥
 But Is It Art Inc
 Canadian Medical Protective Association
 Subhas Chandar
 Lillian Cherwick
 Cityblock Health
 C. Michael Cohoe
 Mr & Mrs Earl S. Coleman
 Pam & Andrew Cooke
 John Cormack
 Monsieur & Madame André G. Couture
 Abbé Léo Couture
 Shari Currie
 Dr & Ms Michael Czubyrt
 Lise Daley
 David R. Dalton
 Kirk Dellebuur
 Fernand Desjardins
 Kirsty Deuchars
 Mrs Catherine Dewar
 Travis Dietrich
 Gail Doherty
 Lucille Dumaine
 Mr & Mrs Long Ung Duong
 Mr & Mrs Lawrence Dyck
 Ms Jane Edstrom
 Mr & Mrs Werner Ens
 Mr & Ms John Epp
 Erwin Erhardt
 European Art Glass Ltd.
 Geertruida Farenhorst-Derie
 Dr Paul Fernyhough
 Karl Fey
 FABCA Construction Ltd.
 Rod & Elaine Fisher
 Jeffrey Floren
 William Ford
 George & Lea Frame
 Frankie's Italian Kitchen
 Fred R. Klein Law Corporation
 Elwood Friesen
 Judith Friesen
 Mr & Mrs Wilbert Friesen
 Julie Garlinghouse
 Cory & Valerie Garrard
 Rachel Gautron ♥
 Anne Gaye
 Robert Geddes
 Rob Gemmell &
 Anita Janzen-Gemmell ♥
 Mr & Mrs Lawrence Giesbrecht
 Sylvia Gray
 Paul Grower
 Debbie Guenette
 Karen Marie Habersky ♥
 Alan Hamilton
 Mr & Mrs Kenneth Hanssen
 Mrs Elaine K Hardie ♥
 Catherine Harrison
 Devin Hasanally ♥
 Yvonne Hawryliuk
 Heritage - Buhler Gallery Fund
 Dr Lorna Heuchert

Jacqueline Hickman
 Hilary Druxman Design
 David Hisco
 Joseph Hofer
 Ethel Hook
 Dan Hornbeck
 Richard Howard
 Evelyn Humeniuk
 Danny Hutch
 Mr & Mrs Jerry G. Ilchyna
 J Stuart & M Joan (Hewlett) Matheson
 Family Fund
 Doug Jackson
 Margaret Jeffries
 Tomislav Jelic
 Daphne J. Johnson
 Meryle Johnston
 Sarah Keating Sangalang
 Gerard Kennedy
 Bruce H. Kiecker
 Carol King
 Dr Jean Kinsner & Dr Witold Kinsner
 Caroline Kiva ♥
 Mr & Mrs Jose Koch ♥
 Glenn & Noella Kolt
 Leonard & Judith Komenda
 Brian Korba
 Albert Kornelsen
 Matthew Kroeker
 Mr & Mrs Ken Krulicki
 Janet Kuchma
 David Kuik
 Monsieur & Madame Denys La Rivière ♥
 M Lionel Piché & Dr Christine
 Lachance-Piché
 Heidi Lacza ♥
 Ladco Company Limited
 Ray Landry
 Mme Gisèle Lapierre
 Don Lavallee
 M & Mme Philippe Leclercq
 The Honourable Mr Philip Lee, C.M., O.M.
 & Mrs Anita Lee
 Mme Doris Lemoine ♥
 Ms Cindy Leszczynski
 Brent Leung
 Michael Leung
 Shirley Leung
 Ben Li
 Bruce & Norma Linney
 Ronald Loeb
 Mrs Margeret Lofvendahl
 Joseph Lorange
 Stephanie Losky
 Haney Louka
 Monika MacAngus
 Mr Scott Mackenzie
 Mr & Mrs David MacMillan
 Joan & James MacMillan
 Mr & Mrs Bruce Madison
 Dianne Magnusson
 Brian & Donna Malenki
 Joseph & Judith Malko
 Ms Una Malvern-Komzak
 Theya Marin
 Garry Markham
 Angus Marshall
 Dr Maurice & Marjorie Gyde Fund
 Judith McDougall
 Mr & Mrs Tom McEachern
 Dr Anthony McInnis ♥
 Mr & Mrs Charles A. McMillan
 Howie McNicoll

Gordon Megarry
 Dr. Damon Merredew
 Alice Morton
 Laura N. Msimang ♥
 Nancy Mullick
 Melville Leslie Murdy ♥
 Nancy Wilkinson Charitable Organization
 Susan Nielsen
 Niverville United Church
 Phil Noonan
 Wendy Novak
 Shirley O'Neil
 S S. Osinski
 Leo & Lorraine Pantel
 Edwin Peart
 Mr & Mrs Peter Pelech
 Bonnie Perchaluk
 Mrs Rochelle Pincovich
 Alice Plamondon
 Mr & Mrs Ryan Plett
 Thelma Plummer
 I. Greg Podolsky
 Mr Lloyd Porcher
 Mr Garth Potter
 Mr & Mrs Eugene R Prieur
 Mr & Mrs Lorne Proudlock
 Qualico
 Elaine Raynor
 Nancy & Ray Reeve
 Sabrina Reid ♥
 Dr & Mrs Reid
 Ben Reynolds & Whitney Roos
 Mrs Henriette C Ricou & Dr Jure
 Manfreda
 Henry Riffell
 Denise Robidoux
 Monique Robidoux-Ting
 Ann Roehl ▲
 Mr Scott Roehl
 Anthony Romeo
 Mr & Mrs Sidney Rosenhek
 Lori & Marty Rosner
 Monsieur & Madame Guy L. Roy
 et Hélène Roy
 Richard Ryland
 Alfred Santos
 Shelley Saunders & Kenneth Capelle
 Evelyn & Stephen Schaefer
 Dr Ken A. Shek
 Mr & Mrs Werner Scheurer
 Rosemary L. Seekings
 Samar Seoudi ♥
 Hiren Shah ♥
 Sourabh Sharma
 Nancy E. Sheffield
 Eileen Shewchuk
 Kimberley Shiel
 Merrill Shwaid
 Burle M. Silverman ▲
 Mr & Mrs Larry M. Smith
 Michelle & Scott C. Smith ♥
 Mrs Carol Soble
 Richard & L. Michelle Soenen
 Dr Beth Spriggs
 Mme Annette St Pierre
 Andrew Steiman
 Dr Miyoung Suh
 Todd Sykes
 Kazimierz Syposz
 Gérard & Jeanne Therrien
 Murray Thidrickson
 Audrey Thompson
 Kris Thorkelson

Thorvaldson Care Center
 Paul Tolaini
 Samia Torcivia
 Bradley Torgerson ♥
 Mr & Mrs Neil Trembath
 Mr Oai Truong
 TurningPoint Financial Services Corp
 Mr & Mrs John Van Rees
 Karen & Richard Veale
 Leslie Veale
 Mr & Mrs Paul Vercaigne
 Cornelius Waldner
 Slawomir Waplak
 Dean & Teresa Wareham ♥ ▲
 Monika & Rudy Warkentin
 Lisa Marie Watt
 Alys-Lynne & Steve West
 West Coast Auto & RV
 West End Radiators
 Abe & Mary Wiebe
 Jeffrey & Nichola Wigle ♥
 Dr Catherine Wilkie & Dr Amarjit Singh
 Kristen Wittman ♥
 Salem Woodrow
 Judith Worbeck
 Linda Wren ♥
 Wu Family Fund - The Winnipeg
 Foundation
 Simeon Yap

\$250 to \$499

Joe Aiello
 Allan & Louise Windas Research Fund -
 The Winnipeg Foundation
 Charles Allard
 Mrs Josephine Ambrosi
 Mr & Mrs Brad Ambrosie ♥
 Mary Amos
 Lyle Antoniuk ♥
 Svetlana Applebaum
 Janice Appleyard
 Alina Arnold
 Mr Michael Averbach
 Mrs Carol Babiak
 Gerry Babij
 June Bakker
 Mr & Mrs J. Lance Barber
 John Barsby
 Allan & Andrea Baskin
 Rosalie A. Beamish
 M Yvan Bédard
 Aubrey Belfast
 Byrnes & Barb Benoit
 Eric & Maureen Bergen
 Sarwa Bhagria ♥
 Mr & Mrs George Bock
 M Raymond Boily
 Nicole Bonomo
 Jill Borger
 Boston Pizza Enright Group
 Alain Boucher ♥
 Betty Brand ♥
 Gregory Bridges
 Robert Brisson
 Dennis & Elizabeth Brown
 Mr John E Brown
 Dr Scott Brudney
 Cynthia & Richard Bryant
 Mr & Mrs Lorne Buchanan
 Gerry Budnick
 Adell Budnick
 Howard Buffie
 Debbie Burka

Diane Bussoli
Sandra Butel
Mr Gerald Butler
Ms Lauren Campbell
Canadian Pacific
Dr & Mrs Dennis Caners
Louise Card
Charles Carlson
Frances Ceriko
Mr & Mrs Michael Chaikoski
Betty Chalmers ♥
M & Mme Leo Charriere
Ioanis Chatzoglou
Dr Thor Choptian
Terry Chrisp ♥
Rachel Claeys
Gerald Clement
M & Mme Raymond Clément
Clinique St. Boniface Clinic
Gail Coghlan ♥
James & Linda Colman
Elcira Cordova ♥
Mr Barry Cox
Mr Andrew Critchley
Brian & Barbara Crow ▲
Donna Cushnie-Alexander
Anthony Cyre ♥
Mrs Marie Dary
Nick DeBoer
Pete Defoort
Michelle Deger
Guy Deremiens
Fred J. & Marlene Dickson ♥
Mr & Mrs Ron Diduch
Ms Elizabeth Dillon
David Dionne
Margaret C. Dominowski
Dr Fiona Crow Medical Corporation
Monsieur & Madame Albert Dubé ♥
Neil & Carol Duboff and Family
Eva & Doug Dufresne
Joy Dupont
Thomas H. Dyck
Robert & Sylvia Fenton
Ivan Feriolo
Monsieur Ulysse Fillion
Barbara Forsyth
Olga Franczyk
Yolande Freynet
Judy Friesen
Sara Friesen
Dianne & Ray Frost ♥
Fueltec Automotive Ltd
Steven Gallant
Mr Gilbert Gariepy
Lynne Gauld ♥
Evelyne & Henri Gauthier
Ernest Gelmich
Gerard & Maureen Rodrigue
Endowment Fund

Lise Gervais ♥
Joanne Gibson ♥
Victor Giesbrecht
Susan & Jon Gill
Mr Alvin Gill
Mr & Mrs Norman Girouard
Aimé Gobin
William Goertzen
Joanne Gogal
Victoria Gratton ♥
Mr & Mrs Kenneth Green ♥
Margaret Gregory
Alvin Grospe
Vincent & Melissa Guzik
Jacqueline Hall
Wanda Hall
Del Halliday
Beverley Hansell
Patricia Hansen
Mr Pat Harding
Allison Harris
Wendie & James Harrison ♥
Ursula Hartel
Ms Birgit Hartel
Gloria M Hartley ♥
Jack & Claire Hayes
Monsieur Denis Hébert
Mrs Elsie Heide
George & Nettie Heide ♥
Mr Charles Henaire &
Ms Monique Gauthier
Kyle Hendin
Chris Hewitt
Simon Hiebert
Murray K. Hiebert ♥
C. Dudley Hill
Mrs Arlene Hints
Christopher Hoey
Thomas Hofer
Krystina Holota
Sandy Hominick ♥
Mary E. Hornby
Mr & Mrs Andrew Horosko
Nancy Howison
Mr David Hrynkow & Ms Audrey Saxton ♥
Ms Judith Huebner
Dr Daniel Hunt
Mr Harold Hunter
Kevin Hutchinson
Mr & Mrs Arsenio Huypungco ♥
Mr Boris Hwozdulych
Mary Ireland
Colin Irving ♥
Reverend Robert Jacob & Vi Jacob
Dr Eric & Mrs Daniela Jacobsohn
Daniela Jacobsohn
Mr & Mrs Crawford Jenkins
Tom & Susan Jeroski ♥
Mary & Derek Johannson
Kara Johnson

Garth Johnson
Mr Matt Johnston
Patricia Jordan
Mr & Mrs Gerald Kalef
Sheryl Kapitiz
Raymond Karl
April Katz
Sam A. Katz
Fred & Rosemary Kecht ♥
Mr & Ms Gregory Keith
Dr & Mrs Chris Kiazky ♥
Dr Lorrie Kirshenbaum
Brynna Klasser
Irene Klump
Benoit Kolt
John & Carolyn Kostal
Ken Kovacs
Melba Kruschel
Patricia Kuchma
Stjepan & Dragica Kukec
Mr Tadeusz Kukula
Alex Kurceba
Mr Larry Kurtz
Tat Lai
Ms Nancy Latocki
Mrs Yvonne Laurent
Mr & Ms Maurice Lavergne
Elsie Leary
Elenor Lebeau ♥
Frederick A. Lee & Laurie Shapiro
Mr & Ms Tom Lee
Marilyn Leggatt ♥
Irwin Lennox ♥
Leo's Group
Ms Krystyna Leszczynski
Gary Light ♥
Mr & Mrs Dick Lim
Mr & Mrs Wendell Lind ♥
Joan & Fraser Linklater
Rochelle Litvack
Dr Shuangbo Liu
Joyce Loftson
Jon Lyon
Robert Macdonald
Kenneth MacDonald
Mrs Kathleen MacIver
Mary Manson
Maric Homes
Kathleen Markle
Shirley Martens
Mr & Mrs Patrick J. Matthews
Maxim Truck & Trailer
George McBurney ♥
Mr & Mrs Jared McCarthy
Daniel McCulloch
Mr Peter N. McDougall
Kimberly McGill
Rob McGowan
Mrs Lily McGowan
Paul R. McKenna ♥
Douglas Mckinnon
Garry McManus
Kelly McMullan
Norman Meade ♥
Margot Meagher
Gary Michaluk
Peter Miller & Carolyn Garlich
Mr & Ms Stephen Miville ♥
Terry Mlynarovich
Judy Moon ♥
Nigel Moore

Marty & Lisa Morantz
Elizabeth Morash
Vera O. Moroz
Mr & Mrs Marvin Morris
Denis Muller
Mr & Mrs Gordon Murphy
Kayla Murray
Rosemarie Muzyka ♥
Rick & Anne Neufeld
Raymond Nield
Ms Muriel O'Brien
Walter Olczyk
Mr & Mrs John Olive
Shirley O'Neill ♥
Mr & Mrs Edwood Oswald
P J Falcon Inc
George Pawlyk
Joanne Pearson ♥
Cynthia Pellerin
Suzanne Pelletier ♥
Burton Penner
James & Patricia Penner
Mr & Mrs Elroy Penner
Wilmer Penner
People's Full Gospel Church
Jerald Peters
Mr & Mrs Rodney Petersen
Jean Piché
Mr Sheldon Pinx
Erin Playfair ♥
Bonnie Polischuk
Frances Pollard
Ceceile Porter
Donato Potenza
Murray Potter
Daphne & Greg Proke
Ms Claudia L. Prusak
W. John Rae
Tim Rafferty
Dr Kevin Ramchandrar
Margaret Redekop
Michael Reid ♥
Daryl & Sheila Reid ♥
Pamela Reimer ♥
Katherine Reimer
Gregory Reiser ♥
Deanna Rempel ♥
Martha Rempel
Donna Reutter
Gerald Rheault ♥
Judy Ridley
Marguerite Rivard
Jeannine Robert
Rock Lake Colony Ltd
Joël Rondeau
Dr & Mrs James Ross
Perry Rubenfeld
Mr & Ms Jerry S Rubin
Colin Ryan, CFA
Ms Sandra L. Sadler
Catherine Mary Savage ♥ ▲
Savan Coffee Bean
Alice Sayant
Rachel & Dean Scaletta
Kenneth & Marjorie Schade
Edmond & Mary Schaeffer
Juliane Schaible
Anna Schlamp
Daniel Schmidt
Mr & Mrs Frank Schulz
Mr James Scollan

"I wanted to give back for the care that my mother received recently. Over the past several years my mother has been in the St. B Emergency Department many times. I know the importance of the redevelopment and expansion project to our city and province."

Blake Fitzpatrick, donor



Iain Scott
Debra Scott
Ronald A. Seemark
W. Hobart & Brenda Searles ♥
Mary Ann Shaw & Nevin Shaw
Ken & Maxine Shyjak
Ray Silvius
Ms Hazel Skinner
Randal Skromeda
Mr Robert Sly
Susan Smandych
Debbie Smiley
Fernande Smit
Rae Smith
Peter & Corinne Smith
Mr & Mrs Raymond Souque
Mr & Mrs Don Spitzer
Benoit St Onge
James Stewart
Andrew Stibbard
Lisa Stiver ♥
Shirley Stovin
Marnie Strath & Bob Friesen
Gerald Strom
Martin Stroud ♥
Stud's Construction
Dennis E. Sweeney
Ms Helen Swinn
Peter Szewczuk
Mr & Mrs Robert Taylor
Neil Taylor
Joel Tellier
Mr & Mrs Ron Templeton
Maurice & Diane Therrien
Louise Thiessen
Dr & Mrs Thomas P Thomas
Wayne Brian Topping ▲
Trung Tran
Transcona Roofing (2000) Limited
Mrs Marilyn Trepel ♥
Lesli Trottier ♥
Laurette Truszynski ♥
Kelley & Rick Turnbull
Cheryl Ann Tyslau
Mr & Mrs Fritz Ulrich
Mr & Mrs Norm Ulyatt
Lil Urichen
Ms Louise Van Buckenhout
Melvyn Verin ♥
Genevieve Vipond
Trieu T Vo
Mr & Mrs Curt Vossen
Susan Wagner ♥
Mr & Mrs Ted Wall ♥
Travis Warner
Murray Warren
Peter Wasechko
Susan Waters Larocque
Chris Watson
Muriel Waywood
Douglas & Wendy Whitlaw ♥
Katelyn Wideman
Peter Wieler
William Wiens
Mrs Mary Williams
Sharon Williamson ♥
Mr & Mrs Dennis Wilson
Jack Wladyka
Jocelyne Wladyka ♥
Marion Woloshyn
Enid Woo

Sandra Yerama
David R. Young
John Zacharuk
Arthur & Jane Zegil
Howard Zink ♥
M D Zipursky
Mr & Mrs Daniel Zirk
Walter Zubrecki ♥
Denis & Lawrie Zuk

Monthly Donors

Iyola Afolabi ♥
Mark Ahrens-Townsend ♥
Mr & Mrs George Allen ♥
Anniebelle Stevens ♥
Joyce Anthony ♥
Dr Shiu-Yik Au ♥
Temitope Ayandokun ♥
Carol Baird ♥
Colette A. Balcaen ♥
Scott Balneaves ♥
Barbara Barnes ♥
David & Janette Barrett ♥
Yuvraj Basra ♥
Gabrielle Bautista-Delgado ♥
Eric Bayer ♥
Stuart Beasley ♥
Sylvia Berard ♥
Jessie C. Bewer ♥
Lorna G. Bilokury ♥
Shirley Blundell ♥
Vincent Boileau ♥
Stephen Bonkoski ♥
Wendy Botkin ♥
Ronald E. Boucha ♥
Mr Ron D. Boyd ♥
Glenn Bradshaw ♥
Michele Brooks ♥
Marva Brooks ♥
Darrell Brown ♥
Cameron Brown ♥
Grace Buhr ♥
Tansey Buike ♥
Helene Bulger ♥
Gerry Caley ♥
Dolores Campbell ♥
Alexander Campbell ♥
Joy Carter ♥
Lynne Champagne ♥
Julie Chartier ♥
Esperance Cikuru ♥
Mr & Mrs Lawrence Clark ♥
Mr & Mrs Eugene Clune ♥
John Coates ♥
Karen and Marek Corbett ♥
Brian Cordingley ♥
Joyce Cormack ♥
Mr & Mrs Brian K. Croxford ♥
William Dechant ♥
Marie Del Rosario ♥
Richard Denchuk ♥
Mona Devion ♥
M. Beverley Dixon ♥
Jelena Dordevic ♥
Henry Dow ♥
Nancy Drinkwater ♥
Mr & Mrs Keith Dryburgh ♥
Sarah Dueck ♥
Mr & Mrs Gordon L. Dunn ♥
Stacey Erlendson ♥
Mr & Mrs Bill Feldman ♥

Shayna Ferens & Paul Fontaine ♥
Mr Douglas Fernandes ♥
Mr & Mrs Gerald Flood ♥
Tetty Flower ♥
Lynn Forsyth-Levine ♥
Mr & Mrs Leonard Funk ♥
Pauline Gagnon ♥
Joseph Gambin ♥
Ronald & Janis Gibson ♥
Karen Glugosh ♥
Irene Gobin ♥
Robert Gordon ♥
Dawna Graham ♥
Mr & Mrs Lyall Gravel ♥
Ludwig Gruber ♥
Mr & Mrs Marcell Walczak ♥
Allison Harris ♥
Nadia Hartung ♥
Naomi Hawryluk ♥
John Hayes ♥
Dr Frank J. Hechter ♥
Mrs Bernice Heinrichs ♥
Ms Rosalina Henson ♥
Wayne Hoard ♥
Douglas Holmes ♥
Mr & Mrs Esteban Homol ♥
Sue Hryciw ♥
Mr & Mrs Kenneth Hudson ♥
Sheila Ilagan ♥
Mr & Mrs Jim Jarrett ♥
Johan A. Kamperman ♥
Jenn Kess ♥
Laretta Kinamore-Obeng ♥
Sandra King ♥
Roger Kingsley ♥
Larry Klassen ♥
Elizabeth Komar ♥
Volodymyr Kovalyov ♥
Mr Douglas Krampetz ♥
Robert & Hazel Lamont ♥
Richard Landa ♥
Gisèle Lapointe ♥
M Alfred Laurencelle & Mme Yvonne Marion ♥
Mr Eric W. Lee ♥
Matthew & Elizabeth Lepage ♥
Lorilee Leslie-Cole ♥
Mr & Mrs Larry Livingston ♥
Marg Loucks ♥
Paula Lucas ♥
William Macdonald ♥
Eleanor Mackeen ♥
Linda MacLellan ♥
Barbara Maguire ♥
Kat Marsch ♥
Mr Ken Martin ♥
Peter G. Maruca ♥
Bruce Matthes ♥
Hertha Matthes ♥
Marc & Gisele Maynard ♥
Elaine McCracken ♥
Mr & Mrs Gregory K. McCullough ♥
Lorena Michurski ♥
Marshall Mitton ♥
Randall Morrison ♥
Evelyn Christine Myskiw ♥
Irene Mytz ♥
Sandra Nakka ♥
Brad Nazar ♥
William Neill ♥
Sherri Nobiss ♥

Monsieur & Madame Marc Normandeau ♥
Donald Olson ♥
A. O. Palmer ♥
Paul Patry ♥
Lois Patterson ♥
Sara Penner ♥
Mr George Perreux ♥
Joanne Peters ♥
Edith E. Peterson ♥
Ms Ida Pilgrim ♥
Mr & Mrs Kenneth Porath ♥
Mr & Mrs Laszlo Pothe ♥
Laura Potts ♥
Mr & Mrs Robert E. Potts ♥
Joel Prejet ♥
Rutheba Provitina ♥
Patricia Pruden ♥
Steffie Prydun ♥
Jim J. & Josie Rak ♥
Rhonda Ramsay ♥
Theodore Redekop ♥
Bonnie Robinson ♥
Lynnsey Rose ♥
Irene Roy ♥
Terry Ruuska ♥
Solange Salama ♥
Elizalde Santos ♥
Eileen Lynne Saundry ♥
Michelle Savard ♥
Mr & Mrs Ian Sawyer ♥
Mrs Nancy Schenkeveld ♥
Amelita Schmidt ♥
Paul Schroeder ♥
Ian Seunarine & Alejandra Diaz-Roman ♥
Ronald Shasta ♥
Mr & Mrs Barry Shaw ♥
Harvey Shaw ♥
Mr & Mrs Garry Sheldon ♥
Hugh Skimming ♥
Carole Solmundson ♥
Paul Steer ♥
Michael Still ♥
Mr Victor Stubbings ♥
Ms Connie Sworyk ♥
Mr & Mrs Mulmeoderhwa Tabaro ♥
Richard Tabor ♥
Lorena M. Thiele ♥
Lisa Thomson Stifora ♥
Eugenia Tighe ♥
Adrian Toms ♥
Mr & Mrs Gary Topham ♥
Concepcion M. Torres ♥
Mme Janine L. Tougas ♥
Carly A. Trotter ♥
Ronald Tumak ♥
Lynda Tunny ♥
Heather Turnbull ♥
Stacey Walterson ♥
Bessie R. Ward ♥
Garnet Ward ♥
Mr & Mrs Jeff Watson ♥
Dr Peter T. Williams ♥
Anastasia Wojtyniak ♥
Dale Worrall ♥
Dr Errol Wright ♥
Rhonda Youell ♥

♥ Monthly Donor

▲ Member, Legacy of Hope Society

This listing includes those generous supporters who made gifts and pledge payments of \$250 or more and all monthly donors in 2022. We carefully review this listing and make every effort to list our donors according to their preferences in the manner and in the language in which they wish to be recognized. Please help us ensure the accuracy of this list and contact the Foundation at 204-237-2067 or info@stbhf.org if you find an error or omission.

You made it possible

“A Game-Changing Experience”

A vascular surgeon at St. Boniface Hospital says Manitoba’s first endovascular hybrid operating room “has been an order of magnitude change in terms of patient care.”

Dr. Randy Guzman, Regional Lead, Section of Vascular Surgery, WRHA and Service Chief, Section of Vascular Surgery, St. Boniface Hospital, performs procedures regularly in the new endovascular hybrid operating room, which opened in December 2022. Foundation donors like you fully funded the initiative and made the \$6.5 million project possible for the Hospital.

A hybrid operating room is a surgical theatre equipped with advanced medical imaging devices that enable and simplify minimally invasive surgery, which is less traumatic for patients.

“The technology is state of the art. The imaging is amazing, and the clarity of the technical aspects of the procedures, and the stents, and balloons, it has

changed the way you look at things in the operating room,” he said.

“You can see everything that you need to see. You can do different angles of the stents and procedures; you can mark things directly onto the video screens. If you can see better, you can do better,” he remarked. “I think patients are getting better care now because we have better imaging and better equipment. That’s the bottom line, and that’s a good thing.”

“It’s been a game-changing experience. It’s much more enjoyable for surgeons to be able to see exactly what they want to see.”

St. Boniface Hospital provides our surgeons with leading-edge technology, all thanks to you.

Dr. Randy Guzman, Regional Lead, Section of Vascular Surgery, WRHA and Service Chief, Section of Vascular Surgery, St. Boniface Hospital.



You equipped Emergency staff

The Best Critical Care

As the Emergency Department redevelopment and expansion continued to take shape (see page 22), donors stepped up to fund more than \$100,000 in vital Emergency equipment that will enhance care now and in the future.

Thanks to donors like you, Emergency staff can use a mobile ultrasound system to make bedside diagnoses, meaning patients experience less trauma and anxiety. The system lets physicians and technicians evaluate nearly all major organs, without the need to move the patient to a separate area.

Ultrasound-guided technology at the point of care also makes it easier for caregivers to find and reach hard-to-see veins – critical in caring for patients who require intravenous treatments through a central catheter. The result is less trauma for an already-vulnerable patient, their loved ones, and sometimes, even the caregivers.

Donors also provided the Emergency Department with:

- A mechanical system for chest compressions to keep up life-saving circulation during resuscitation efforts.
- A simulator to help Emergency nurses, doctors, and residents to gain crucial knowledge in cardiac arrhythmias and keep their critical thinking and decision-making skills sharp.
- Equipment to perform video laryngoscopy in critically ill pediatric patients.

Thank you for supporting emergency care for all Manitobans at St. Boniface Hospital.

2022 events

You Had Fun with Us

Outstanding community support made St. Boniface Hospital Foundation's signature events a smashing success in 2022!

Our amazing sponsors, guests, donors, and third-party hosts helped raise HALF A MILLION dollars last year.

From a gorgeous day on the links at the National Bank Cardiac Classic, to evening wine and roses at Rosé Soirée, and heartwarming stories on the airwaves during the Radiothon of Hope and Healing, you made a difference and had a lot of fun! Proceeds have had a positive impact across the Hospital, including funding for cardiac care and research, our Emergency Department redevelopment and expansion, and more. Thank you.



**Radiothon of Hope
and Healing**



Rosé Soirée



**National Bank
Cardiac Classic**

2022 Sponsors

National Bank Cardiac Classic

Title Sponsor

National Bank

Presenting Sponsors

Burgundy Asset Management
Canada ICI
Johnston Group
Qualico

Corporate Sponsors

Bockstael Construction
Caisse Financial
Christianson Wealth Advisors – National Bank
Financial Wealth Management
Gardewine
Klassen Wealth Advisors – National Bank
Financial Wealth Management
KPMG
Ladco Company Limited
MMP Architects
Medtronic
Réseau Compassion Network
Solinsky Consulting

Media Sponsor

The Free Press

Print & Signage Sponsors

Prolific Group
Contempra Signs

Rosé Soirée

Rose Gold Sponsor

CP

Silver Sponsor

S&J Construction

Copper Sponsors

The Asper Foundation
The Fort Garry Hotel
Gail Asper Family Foundation

Patrons

A&S Homes
Bokhaut CPA Inc.
Manitoba Blue Cross
Medi-Gar/Innovair
Rady Faculty of Health Sciences,
University of Manitoba
Solinsky Consulting
Thompson Dorfman Sweatman LLP

Fund-A-Need Sponsor

Adesa

Raffle Sponsor

Simon Imports

Culinary Sponsor

WOW Hospitality

Wine Sponsor

De Nardi

Mocktail & Distinction

Sampling Sponsor

Manitoba Liquor Mart

Fireworks Sponsor

Pratts Wholesale Food Service

Media Sponsor

The Free Press

Print Sponsors

Prolific Group
Contempra Signs

Radiothon of Hope and Healing

Presenting Sponsor

Vickar Automotive Group

Matching Sponsors

Bockstael Construction
Concord Projects
Manitoba Metis Federation

Hourly Sponsors

Cadorath
Enterprise Rent-A-Car
Foodfare
Pasquales
Payworks
Piston Ring
SI Alarms
Western Financial Group/Wyatt Dowling
Insurance

Phone Sponsor:

Zoomfone

Media Sponsor

The Free Press

2022 Third-Party Supporters

Hilary Druxman Design
Lilystone Gardens Gala
Randy Viray Golf Tournament
Gobiel Family Facebook Fundraiser
Salisbury House Pay It Forward Campaign
L.V. Control Manufacturing Limited/
Grant Floren
Vickar Automotive Group Employee –
Radiothon of Hope and Healing

You are building

The Emergency Department our Community Deserves

From shovels to steel beams, St. Boniface Hospital's Emergency Department redevelopment and expansion took form at a brisk pace this past year.

Construction officially began with a ground-breaking ceremony on April 26, 2022. The \$141 million project is slated to open in 2025.

St. Boniface Hospital Foundation President and CEO Karen Fowler announced the Foundation and its supporters would raise \$10 million to help set a new standard in emergency care that promotes health and well-being, with compassion at the heart of every interaction.

"Time and again, our community has shown us they will rally for an important cause and made life-changing advancements for patients at the Hospital," said Fowler.

"We are asking Manitobans to invest in this important project, as the Hospital embarks on creating an environment that supports timely and compassionate care in our most critical moments."

Nurse Andrea Budnick knows first-hand that patients come to the Emergency Department at some of the most difficult moments of their lives. These moments can be even more difficult if only a curtain separates them from the next patient.

"Something as simple as a door that closes will make a big difference to those experiencing difficult times," said Budnick. "Today, the entire department has only about five doors. The new facility will have more than 40."

The new Department will include dedicated family consultation and bereavement rooms, offering confidentiality and private space to make decisions or say goodbye to a loved one. Exam rooms will be separated by walls and equipped with sliding glass doors that ensure safety and privacy.

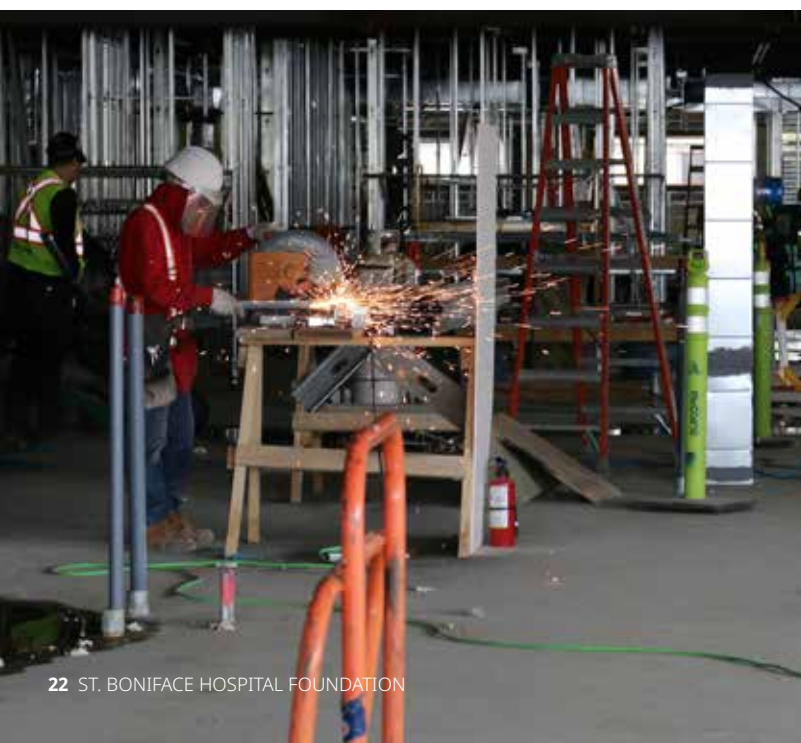
The Department will also attend to the unique needs of the people it serves. Patients experiencing mental health issues, for example, will receive dedicated triage and treatment in a specialized area that ensures their safety and comfort.

"Whatever our patients are dealing with, the peace and security of a private room will improve our ability to provide compassionate care," said Budnick.

Thank you for supporting emergency care for all Manitobans at St. Boniface Hospital.

FUN FACTS ABOUT THE NEW EMERGENCY DEPARTMENT

- ♥ A stormwater retention chamber beneath the new south parking lot can store 171,000 litres of water during heavy rain, which can then be slowly released back into the land drainage system.
- ♥ Over two and a half weeks in September 2022, 330 trucks travelled through the construction site to remove and deliver material, with a single-day peak of 45 trucks.
- ♥ Structural steel installation for the new Emergency Department requires a 220-ton crane setup.



Your compassion gave parents comfort Sending Them Home

Parents and family members who had experienced the grief of a loss immediately before or after birth at the Hospital gathered at the St. Boniface Hospital Monument on June 23, 2022, to say goodbye.

The Réseau Compassion Network Spiritual Purpose Fund supported the annual Committal of Ashes Service in the St. Boniface Cemetery located on Archibald Street. The Fund helped cover the costs of a large open tent, tables and chairs, flowers, and a sound system for the ceremony. The service was held at the Monument to honour the losses experienced by the families.

Parents who experienced a loss due to an ectopic pregnancy, stillbirth, miscarriage, or newborn death were invited by the Hospital's Spiritual Care team to meet under the tent for the ceremony. About 115 people attended, said Cheryl Bennett, Program Team Manager, Palliative Care and Spiritual Care, St. Boniface Hospital.



Members of St. Boniface Hospital's Spiritual Care team at the Committal of Ashes Service at St. Boniface Cemetery in June 2022.

"It was a very moving service. There were no dry eyes there," said Bennett. "Pregnancy loss is not talked about a lot. Parents had hopes and dreams that are now lost. They grieve the pregnancy, but also, the vision they had for their future."

You brought care and compassion to parents seeking closure. Thank you.

Thanks to you

Better-Informed Decisions in Heart Valve Implantation Care

The Transcatheter Aortic Valve Implantation (TAVI) program at St. Boniface Hospital thrives with the support of Foundation donors like you.

TAVI is a safer alternative to open-heart surgery for high-risk patients who need a new heart valve. The procedure instead makes a small puncture in the blood vessel in the patient's groin, neck, or shoulder, threading a catheter and the new valve into the heart.

Donor funding through the Foundation helped launch the Hospital's TAVI program in 2012. Since then, about 800 patients have undergone TAVI at St. Boniface.

TAVI can mean a shorter hospital stay, relief of symptoms, better heart function, and less pain, said Emily Hyde, Clinical Nurse Specialist at St. Boniface.

But while all TAVI patients require a temporary pacemaker, there is a risk that some patients will need

a permanent pacemaker during the procedure – a complication associated with greater length of hospital stay, rehospitalizations, and greater demand for limited intensive care resources.

With the support of the St. Boniface Hospital Foundation Nursing Endowment Fund, the TAVI team undertook a project to validate a predictive risk score for this potential complication. The goal was to identify if this risk score could accurately predict a "fast track" for TAVI patients and better plan the use of an Intensive Care Unit bed.

The team published its findings, *Validation of the Emory Risk Score in the Transcatheter Aortic Valve Implantation Population: A Canadian Perspective* in the Canadian Journal of Cardiology Open.

St. Boniface Hospital is at the leading edge of medical technology, all thanks to you.

Blair Mason's commitment to the future

A Generous Nature

Legacy of Hope Society member Blair Mason's tendency to share started early in life.

"I was born this way," said the retired Morden, Manitoba resident. "I've always enjoyed giving back, especially to those who need it. When I was a kid in school, I would give my lunch away to others. I still buy people meals in restaurants. I have always been a giver."

"It's not because I'm looking for popularity, it's because I like doing it," he added. "I think that anybody who isn't doing this is missing something in life; I really believe that."

Mason grew up on the family farm near Somerset, Manitoba. "My parents were helpful people to the community too, and so were my grandparents. I am a follower of religion, and I believe in the passage that says it's more blessed to give than to receive. I really fall into that category. I would rather give – that's just in my nature," he said.

Mason had quietly included an estate gift to St. Boniface Hospital Foundation in his will many years ago. He let the Foundation know, and formally joined the Legacy of Hope Society as a member, in 2022.

"I have never heard anything bad about St. Boniface from anyone. Especially in the cardiac department. A lot of people from out here have been there. The Hospital serves all Manitobans," he noted.

"After I am gone, my gift can help somebody else along the way."

Thank you to Blair Mason and all Legacy of Hope Society members for their selfless generosity in support of St. Boniface Hospital.



Morden resident Blair Mason (at left) received the Queen's Platinum Jubilee medallion for his generosity, presented in December 2022 by Portage-Lisgar Member of Parliament Candice Bergen. "I wasn't expecting that," he said. Credit: Steve Hiebert/Personal Express Photography.

Legacy of Hope Society

Leaving an estate gift to St. Boniface Hospital is the beginning of a healthier future. It signifies your desire to support those who need care, and those who provide it.

Thank you to our Legacy of Hope Society members, listed as of December 31, 2022.



P Joyce Aitken
 Jack Aron & Aline Trudeau-Aron †
 Judy Balabas
 Therese, Boris &
 Susan Balamatowski †
 Gisèle & Norman Barnabé ♦
 Richard Barrett
 In the memory of Peter and
 Martha Batiuk †
 Gwendoline Beelaert †
 Virginia Beelaert
 Grace Beischer †
 Mrs Ruth Bellan †
 Mr & Ms Paul Berard
 Martin & Ada Berney †
 Mr Paul Besler
 Mary Ruth Bodnar †
 P.M. Bordian
 Mr Ron Borys
 Ted & Helen Breuer
 Yvonne Brockhausen †
 Suzanne Bryner
 Ernst & Hildegard Buhle †
 Mr Mark Calvez
 Linda M. Clarke
 Fernand Combaz †
 Brian & Barbara Crow
 Ellen Curr †
 Marcel Decock †
 Helen M. Dennehy †
 J.A. Roland DesAutels
 Marie-Rose Desorcy †
 Ruth Diamond &
 the late Samuel Diamond
 Anton & Susan Dueck
 Albert J. Duseigne †
 Mary A. Duval †
 Estate of Mary Jean Epp †
 Linda Dianne Everitt ♦
 Leola Ferguson †
 Dr John Foerster †
 Dr & Mrs Kevin Ford †
 Gabriel J. & Marcelle Forest
 Lucile Freynet †

Lydia Gammon †
 Donald Ann Gibb †
 Kris Gladwell
 Denis Gobeil †
 Barbara G. Godfrey ♦
 Doris Gray †
 Ms L Gray
 Mr John D Green
 Mrs Evelyn Griffiths †
 Judith B Hall
 Mrs Antoinette Handler
 Ellen & Albert Hanson †
 Claire Marie Beatrice Hebert †
 Irma Hild †
 Dick & Barbara Hoy ♦
 Richard Hughes
 Alice Hurd †
 Kathleen Huycke (née Doyle)
 Gloria Jones
 Dr & Mrs L.H. Kahane
 Mr & Mrs Walter Kaminsky
 Carmen Kaufman †
 M. Genevieve Kemp †
 John D Kennedy
 Gloria Kilosky †
 Dwaine & Leslie King
 Spencer C. King †
 Mr & Mrs R Klippenstein
 Mr & Mrs Peter Kohut
 John Peter Kolodka †
 A. Nora Konantz †
 Lucy Krasowski †
 Linda J Krupinski
 Gerry & Johanna Kuik
 Christiane & Charles LaFlèche
 Mrs Janet LaForest †
 Mr & Mrs Fred Land †
 Dr Harry & Deanne Lander †
 Margret & Wilfred Lerner †
 Bertha Leeder †
 Mr Gary Leeming ♦
 Morley Lertzman M.D.
 Ms Linda A Lindsay & Mr Craig Jackson

Molly Litsky †
 Muriel & George Loepky
 Mrs Val Loewen
 Beryl Long †
 Anton Lukas Ph.D.
 Eleanor MacDonald
 Dr Brendan MacDougall
 Elda Macki
 Marie Maguet
 Michael Malech †
 Nasser A Malik
 Alan S. Malmgren †
 Blair M. Mason ♦
 Stanley Albert Matthew †
 Ruth A. McCutcheon †
 Vernon & Barbara McGregor
 Noreen S McPhail †
 Barrie & Marvelle McPherson, CM
 Marion G. McRuer †
 Reta Evelyn McRuer †
 Nancy & Carmine Militano
 June Milne
 Isabel Mitchell
 Joseph & G. Patricia Morrison †
 Randall Morrison
 Marlene A. Mortimer ♦
 John & Dolores Morton †
 Clare & Shirley Moster
 Mr & Mrs Paul Mowdy †
 Peter Neve †
 Gene Dufty Odell †
 Leonard Paul Offrowich
 Ms Heather Olynick
 Patricia & Greg Ozechowsky
 Paula & Ralph Prier †
 John M. Prokipchuk †
 Willie & Edyth Pryor
 Mr & Mrs Ulo Raabe
 Joan Rebeiro in memory of Bert ♦
 Andre & Violette Rebiffe †
 Ben Reimer
 Estate of Anne Reimer †
 Victor & Cheryl Reynolds †

Gordon C. Richardson
 Mrs Marion Rizok †
 Gilbert & Jeannine Robert
 Ann Roehl
 Irène Rosset †
 Paul & Rose Rudko †
 Alfred Saler †
 Catherine M Savage
 WW Shepherd & BK Vane
 Michael Shore
 Burle Silverman
 Clark Sinnott
 Lorraine Smith*
 Mrs Nell Smith
 Jean Sorko
 Robert & Diane Sparrow ♦
 Marjorie Spence †
 Dianne Stanley †
 Anne Stewart †
 Mary-Ann Stewart
 Mr Joel Stewart
 Stephanie Stoter †
 William Sutherland †
 Margaret K. Thompson
 Dr Ian R. Thomson
 Wayne Brian Topping
 Coleman Louis Velin & Evelyn Velin †
 Teresa & Donald D. Wareham
 Kenneth Edward Glen Weedon †
 Margaret Eileen Weir †
 Mr & Mrs Leslie West
 Kenneth L. Wiens
 Albert & Sindee Wilhelmer
 James & Wilhelmina Williamson †
 Paul Woytiuk †
 Wyrzykowski Family
 Mary Louise Young †
 Sam & Kay Yuar †
 Anonymous (35)

♦ **New society member**
 † **Legacies fulfilled**

Donors' names appear in the manner and in the language in which they wish to be recognized. We make every effort to list our donors according to their preference. Please help us ensure the accuracy of this list and contact the Foundation at 204-237-2067 or info@stbhf.org if you find an error or omission.

Statement Summary

Statement of Financial Position

December 31, 2022, with comparative information for 2021

Thank you...
TO OUR
4,749
DONORS in
2022

	2022	2021
Assets		
Cash	\$ 15,815,194	\$ 18,246,944
Accounts receivable	80,756	87,968
Prepaid expenses	142,131	124,313
Investments	70,800,306	77,894,923
Cash surrender value of life insurance	375,737	367,909
Capital assets	274,763	198,630
	\$ 87,488,887	\$ 96,920,687
Liabilities and Fund Balances		
Accounts payable and accrued liabilities	\$ 405,289	\$ 413,530
Grants payable	8,716,640	7,842,737
	9,121,929	8,256,267
Fund balances:		
Unrestricted	3,279,657	4,651,477
Endowment	47,878,394	54,118,236
Operating reserve	5,339,731	6,110,268
Innovation	12,281,600	9,676,675
Restricted designated	9,587,576	14,107,764
	78,366,958	88,664,420
	\$ 87,488,887	\$ 96,920,687

For complete financial statements including notes, contact the Foundation at 204-237-2067 or info@stbhf.org.

Approved on behalf of the Board of Directors:



Carmine Militano, Chair,
St. Boniface Hospital Foundation



Caroline Kiva, Secretary-Treasurer,
St. Boniface Hospital Foundation

Statement of Operations and Changes in Fund Balances

December 31, 2022, with comparative information for 2021

	Unrestricted Fund	Endowment Fund	Operating Reserve Fund	Innovation Fund	Restricted Designated Fund	2022 Total	2021 Total
Revenue							
Contributions:							
Major gifts	\$ 194,974	\$ 165,028	\$ -	\$ -	\$ 2,262,342	\$ 2,622,344	\$ 3,129,570
Development	1,996,435	267,314	-	-	771,171	3,034,920	2,131,911
Investments (note 6)	665,800	11,811	(12,626)	223,342	2,578,690	3,467,017	4,539,708
Unrealized changes in fair value of investments	(929,204)	(6,609,028)	(757,911)	(1,406,830)	-	(9,702,973)	5,859,474
Canada Emergency Wage Subsidy (note 7)	-	-	-	-	-	-	172,681
	1,928,005	(6,164,875)	(770,537)	(1,183,488)	5,612,203	(578,692)	15,833,344
Lotteries							
Lottery revenue	15,126,925	-	-	-	-	15,126,925	15,624,580
Cost of lotteries	11,036,172	-	-	-	-	11,036,172	10,884,852
	4,090,753	-	-	-	-	4,090,753	4,739,728
	6,018,758	(6,164,875)	(770,537)	(1,183,488)	5,612,203	3,512,061	20,573,072
Expenses							
Administration	747,387	-	-	-	-	747,387	709,939
Major gifts	983,534	-	-	-	-	983,534	895,641
Development	1,008,180	-	-	-	-	1,008,180	992,364
	2,739,101	-	-	-	-	2,739,101	2,597,944
Excess of revenue over expenses before grants	3,279,657	(6,164,875)	(770,537)	(1,183,488)	5,612,203	772,960	17,975,128
Grants	837,898	-	-	-	10,232,524	11,070,422	7,041,525
Excess of revenue over expenses	2,441,759	(6,164,875)	(770,537)	(1,183,488)	(4,620,321)	(10,297,462)	10,933,603
Fund balances, beginning of year	4,651,477	54,118,236	6,110,268	9,676,675	14,107,764	88,664,420	77,730,817
Inter-fund transfers for designated donations	-	(74,967)	-	(25,166)	100,133	-	-
Inter-fund transfers per Foundation's policies (note 9)	3,813,579	-	-	3,813,579	-	-	-
Fund balances, end of year	\$ 3,279,657	\$ 47,878,394	\$ 5,339,731	\$ 12,281,600	\$ 9,587,576	\$ 78,366,958	\$ 88,664,420

For complete financial statements including notes, contact the Foundation at 204-237-2067 or info@stbhf.org.

Governance and Staff

Board Executive



Carmine Militano
Chair



Neil Duboff
Past Chair



Jonathan Letkemann
Vice-Chair



Tanya Benoit
Fundraising Chair



Tom De Nardi
Lottery Chair



Joël Rondeau
Finance Chair



Caroline Kiva
Secretary-Treasurer

Board Members



Ida Albo



Nicole Aminot
St. Boniface Hospital
President & CEO



Debbie Burka



Ab Freig



Sam Guertin



Emeka Nnadi



Jean Piché



Matt Sachkiw



Walter Saranchuk

Executive Staff



Karen Fowler, CFRE
President & CEO



Don Barnabé, CPA, CMA
Vice-President, Finance
& Administration



Todd MacNeil
Director, Technology &
Lottery Operations



Lisa Thomson
Stifora
Director,
Communications &
Stewardship

Staff



Shaylene Burrow
Lottery Customer
Services Agent



Lorissa Campbell
IT Support &
Tech. Services
Co-ordinator



Shona Connelly, MA
Major Gifts



Natalie Domienik
Executive
Administrator



Amber Gibbons
Accountant



Garth Johnson
Donor Relations



Paula Lucas
Administrative
Assistant/Receptionist



Randy Matthes
Communications
Officer



Kelly McMullan
Major Gifts



Samarah McRorie,
BAH, BBA
Donor Relations



Nigel Moore
Communications
Officer



Kalyn Murdock
Donor Relations



Ethel Mwecha
Donor Relations
Co-ordinator



Cheryl Tyslau
Gift Processing & Data
Administrator



Jocelyne Wladyka
Relief Receptionist



Kate Yacula, BA Comm
Digital and
Event Specialist